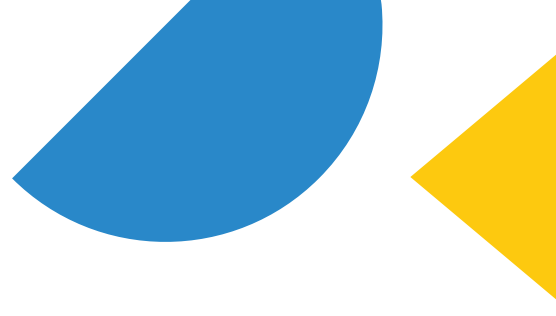


Agenda – 29th November 4- 6pm Janet and Richard’s conservatory

Potential apologies - Madeline

1. Review role of Paul Dodge - RM
2. Sign off October minutes - EB
3. Review of outstanding actions - EB
4. Financial report – TS
5. Marketing - MH
 - a. Overall update
 - b. Discussion on Handbook
 - c. Leaflet distribution
 - d. Driving up facebook usage - EB
 - e. Reciprocal advertising from voluntary groups
 - f. relationship with Over 55’s organisation – EB
6. Membership update – JV
 - a. Review of membership numbers
 - b. update on 63 non-renewals and implications
 - c. update on leavers phone call activity
7. Group update
 - a. Feedback from the group leaders’ meeting
 - b. Outcomes from Risk assessments
8. Meetings update
 - a. Confirmation of December meeting activities – RM
 - b. Monthly meetings – confirmation of plans and responsibilities- RM



9. Administration

- a. Review of the Healthcheck
- b. Update on training undertaken - JF
- c. Mandatory requirements for training – group discussion

10. Review of Policies and Procedures

- a. Review of Members code of conduct - RM
- b. Grievance and disciplinary process - JV
- c. Data protection and data privacy - RF

11. AOB

12. **u3a Health Check - 10 key questions**

13. This questionnaire is intended as a self-help tool only. It is for committees to use as a self-assessment checklist to help them to monitor the health of their own u3a. The results will not be seen by anyone else and it is entirely up to each u3a to make use of it or not as they wish. Help is available from your Regional Trustee, the website or u3a Office, if you want it.

1. Do at least 90% of new members renew their membership after their first year of membership?

YES

NO

Retaining new members is critical to the future of your u3a. Low retention rates suggest that your u3a is not meeting the needs of new members.

2. Do you actively monitor your membership statistics each year?

YES

NO

Analysing your membership statistics will aid your understanding of how your u3a is performing and if your membership is inclusive and reflective of your local community. This should include year on year changes in total membership numbers and changes in retention rates, especially for new members.

3. Has your membership grown for 2 or more consecutive years?

YES

NO

Static or declining membership could imply that your u3a is not attracting new members. This may make life difficult when you need to find new committee members or set up new groups. Attracting new members is important to keep your u3a vibrant.

4. Have you managed your u3a finances without any unplanned deficits for the last 2 consecutive years?

YES

NO

The financial health of your u3a impacts your ability to invest in the resources and equipment that you need to keep your u3a healthy. Unplanned losses will inhibit investment.

5. Does your committee membership change on a regular basis and in line with your constitution?

YES

NO

It is important to bring new members onto the committee every year, if possible. This helps with continuity and avoids a period when most of your committee have to step down as all their terms of office expire at the same time.

6. Do you have effective ways of communicating with all your members?

YES

NO

To be effective in communicating with members there are a variety of methods including the regular monthly meetings, email, post, telephone and your website, which you may be using now. However, in developing your u3a and recognising that members are increasingly used to using other methods, you should consider using the range of social media available to you including Facebook, Twitter or Zoom. You may also consider methods of checking to ensure your communications are reaching all your members.

14. Continued...

7. If you divide the total number of members by the number of your groups - is the ratio of your number of members to number of groups less than 12? YES NO of

Research has shown that vibrant u3as have a ratio of one group for every ten members. If you have a higher ratio, e.g. one group for every 12 or more members, then you have fewer groups than is ideal. This is likely to lead to more groups becoming full. This is especially discouraging for new members who cannot join the groups that they'd like to.

8. Has the number of your interest groups increased year on year?

YES

NO

Groups are the life blood of u3as. Creating more groups gives members more choice and widens their opportunities for learning.

9. Is your u3a open and welcoming to new members?

YES

NO

New members are the source of new ideas, new group leaders and new committee members. Are you encouraging all sections of your local community to join your u3a and making them welcome to join in?

10. Does at least 20% of your membership volunteer?

YES

NO

Volunteers should include anyone who contributes to your u3a including committee members, group leaders and their teams, meeters and greeters, tea and coffee makers, people who help put out chairs etc. u3as are run by volunteers carrying out a wide variety of tasks. If too few of the members actively volunteer, the u3a may be at risk. The indications are that u3as should aim to have at least 20% 'active members' who volunteer in some way best suited to their interests and abilities.

15. If you have answered **"NO" to four or more** of these questions, you may wish to consider developing an action plan to address these issues or seeking help from your Regional Trustee or u3a Office.

16. **Contact u3a**

17. Tel: **020 8466 6139**

18. Email: **info@u3a.org.uk u3a.org.uk**

19. **u3a Office**

20. 156 Blackfriars Road, London, UK, SE1 8EN

21.  twitter.com/u3a_uk  facebook.com/u3auk

u3a Healthcheck

Question	Y/N	Comments	Action
1. Do at least 90% of new members renew their membership after their first year of membership	No	<p style="text-align: center;">New members Following year</p> <p>2018/2019 129 54% renewed</p> <p>2019/2020 86 77% renewed</p> <p>2020/2021 58 85% renewed</p> <p>Calculations based on annual returns to u3a April/March</p> <p style="color: red;">Based on numbers from Sept 2021 – August 2022</p> <p style="color: red;">166 members</p> <p style="color: red;">29 resigned and 20 not renewed</p> <p style="color: red;">70% have renewed</p>	<p>1. Collate these results each year</p> <p>2. Follow up all or a sample of new members who don't renew</p> <p>3. Identify reasons why members don't renew</p>
2. Do you actively monitor your membership statistics each year?	No Yes	<p>We need to do this.</p> <p>We need to decide what statistics we need and discuss them at committee meetings</p>	<p>1. Decide which statistics we need to collect who/what/when</p> <p>2. Collect the stats</p> <p>3. Discuss the stats</p> <p>4. Decide any actions required</p>
3. Has membership grown for 2 or more years?	No	<p style="color: red;">Current membership is 800 – 57 not renewed = 743 members</p> <p>2021/2022 727 members</p> <p>2020/2021 631 members</p> <p>2019/2020 749 members</p> <p>2018/2019 820 members</p> <p>Calculations based on annual returns to u3a</p>	<p>Collect these stats year on year</p> <p>Discuss the stats in relationship to any targets set</p> <p>Identify any action</p> <p>Have a percentage Target/ number of new members each year</p>

		<p>April/March</p> <p>Discussed the effect of COVID and the impact of the changes in membership fee from £35 to £15 to £40</p> <p>Do we have a maximum number of members in my mind?</p> <p>What is our limit?</p> <p>To increase numbers you need to increase the number of groups.</p> <p>What are the budgetary implications?</p>	
4. Have you managed your u3a finances without any unplanned deficits for the last 2 consecutive years?	Yes		
5. Does your committee membership change on a regular basis and in line with your constitution?	Yes	<p>The new constitution means we have to replace officers after 3 years.</p> <p>We still need more members to volunteer for the committee</p>	
6. Do you have effective ways of communicating with all your members?	Yes	<p>Emails, post for non - email members, newsletter, monthly meeting, website, facebook.</p> <p>Many members and indeed group leaders don't see themselves as belonging to a bigger organisation - Basingstoke - Old Basing u3a.</p> <p>Acknowledged that not all members read what we send them.</p> <p>Group leaders have a key role in the transfer of information between members and the committee</p>	<p>Encourage group leaders to pass information on to their members in group meetings</p> <p>Arrange more informal meetings like coffee mornings etc.</p>

7. If you divided the total number of members by the number of your groups – is your ratio of number of members to number of groups less than 12? Vibrant u3as have a ratio of 1 group to 10 members	No	<p>743 members and 69 groups is 1 group for 10.7 members</p> <p>As of 31st March 2022 61 groups 727 members 1 group for 12 members</p>	Aim to have at least 73 groups Identify the action required to do this
8. Has the number of your interest groups increased year on year?	No yes	The number of groups has remained static. Some new groups have replaced groups that have ceased.	As above
9. Is your u3a open and welcoming to new members?	Yes		
10. Does at least 20% of your membership volunteer?	No	<p>Committee 9</p> <p>Group Leaders and deputies 100</p> <p>Monthly meeting 23</p> <p>Total 132</p> <p>132/743 is 18%</p> <p>Committee 13</p> <p>Group leaders and deputies 93</p> <p>Monthly meeting 12</p> <p>Total 118</p> <p>118/727 as a percentage is 16%</p>	Decide how we can encourage more members to volunteer to help even in a small way.

If you have answered no to four or more of these questions, you may wish to consider developing an action plan to address these issues. You can also seek help from your regional Trustee or u3a office.

We have answered 6 out of the questions with no.

MARKETING MEETING 2nd November 2022

Elaine Budd Guy Caplin Madeline Hussey Sylvie Kempster Rod Marshall

Apologies: Janice Vaughan

New Member Coffee Mornings

One to be arranged at the end of January in the Basing area; and in April in the Kempshott area. **MH** Marketing lessons learnt from the first meeting include:

- Members wanted more information on the opportunities available to them
- They wanted more feedback on any requests they had made. For possible inclusion in any newsletter. **RM**
- The contents of the introductory/welcome pack was very important **MH**

Art Exhibition

Date to be agreed with Festival Place mid December. **MH** to double check that there was no need to produce risk assessments/insurance policies etc. **GC** to promote the exhibition on social media and **RM** in the Nov newsletter. For marketing at the Exhibition, alongside the banner it was agreed to provide the Green and Yellow Group Chart from the Meet & Greet Day, together with 100 more general printed flyers. **RM** to send **GC** a copy of the current flyer for review. To include a QR code for access to the website.

Further flyers will be needed over the year for surgeries, libraries, community cafes, retirement flats etc **c/f**
MH to check on missing piece on banner.

Chatter & Natter Days

RM to sound out members about the attractiveness of these cross group meetings. Depending on response, it may be possible to use these to test the ability of St Thomas' Chapel to accommodate meetings. Parking there is adequate, the venue is central and free, and refreshments also provided without cost. But numbers and the need to sign in may be issues. Another possibility is to find a group to try it out.

Review of Marketing Requirements 2022-3

It was agreed to keep marketing at 2021-22 levels, with an emphasis on our social media work. **EB** and **MH** have applied to BVA for Facebook training, alongside Paul Dodge. We recognised the need to engage with group leaders better to help generate fast and timely updates on Facebook. People are still unaware of who we are and what we offer. This could be supported by separate flyers for some of the different types of groups we have, which would underpin our drive to involve them more in our marketing. **c/f**

MH intends to plan out the groups for articles over the year and will keep **GC** updated for the photography. National u3a research had found that men preferred learning activities. Although our u3a has a larger percentage men than average, we agreed that groups like Science & Technology would be good ones to highlight. **MH** to prioritise. Paul Dodge had already provided Transport copy for the December magazine article.

GC offered to contact Tadley u3a to discuss recruitment and marketing, and their most popular groups, following an offer of help at the Church Cottage Older Person event we attended. **MH** to forward contact details. Together with Age Concern, we agreed that the Over 55s Forum and WEA could be other organisations with whom networking could be useful. The latter is strong in Tadley but weak in Basingstoke. Our entry in the Over 55s Handbook also needs review. **MH**

We discussed the ineffectiveness of the u3a name in seizing the attention of our target market, and the need for a tagline. Any suggestions welcome before flyers are printed. **ALL**

Maria Miller Feedback

Basingstoke has a high percentage of older people as a result of the London overspill building around the 1950s. EB was waiting for a list of useful contacts, including local employers and NHS practices.

U3A Meetings Schedule 2022/23

Group	Day/Venue	Time
Art 4 All	First and third Monday of the Month Ridgeway Centre	14:00 – 16:00
Art and craft	Second and fourth Tuesday of Month Christ Church, Shaftsbury Room	13:30 – 15:30
Art history and appreciation	Third Wednesday of the Month Ridgeway Centre	14:00 – 16:00
Backgammon	Second Tuesday of the Month Member's Home	10:00 – 12:00
Badminton	Every Friday Everest Community Academy	15:00 – 17:00
Ballroom dancing	Every Friday Old Basing British Legion	13:30 – 15:30
BCOT luncheon group	As advertised	
Biography	First Wednesday of Month Old Basing Pavilion Room	10:00 – 12:00
Board games	One Tuesday a month St Andrew's Church	13:30 – 15:30
Book Club 1	Fourth Monday Kempshott Village Hall	14:00 – 16:00
Book Club 2	Tuesday, after Monday club Brookvale Village Hall	10:00 – 12:00
Bridge for Beginners	Every Thursday Member's Home	10:00 – 12:30
Bridge for Improvers	Every Monday Basingstoke Bridge Club	14:00 – 16:00
Duplicate bridge	Every Thursday Sherborne St John Village Hall	13:30 – 16:30
Very relaxed duplicate bridge	Every Tuesday *online*	14:00 – 16:30
Calligraphy	Third Tuesday of the Month St Mary's Parish Church	10:00 – 12:00
Creative writing	First and third Thursday of the Month Viabes Craft Centre	15:00 – 16:30
Croquet	Various Starts March 2023 Bowls Club, St Andrew's Road	TBA
Cycling	Various	
Environment in the News	First Wednesday of the Month Chineham Village Hall	14:00 – 16:00
Excursions and holidays	Various	
Family history	Last Wednesday of Month Christ Church Shaftsbury Room	14:00 – 16:00

Film group	Fourth Monday of Month	14:00 – 16:00
Folk and country dancing	Christ Church Shaftsbury Room Every Friday Ridgeway Centre	10:00 – 12:00

Group	Day/Venue	Time
French Basic / Beginners	Every Tuesday Members' Home	10:00 – 11:15
French Basic / Improvers	Every Tuesday Members' Home	11:00 – 12:15
French Conversation	Every Tuesday Zoom	10:00 – 12:00
French Advanced and Intermediate	Every Monday St Leonards Centre Oakley	10:00 – 12:00
Gardening	Fourth Thursday of Month Brookvale Village Hall	14:00 – 16:00
German Basic/Improvers	Every Wednesday St Leonards Centre Oakley	10:00 – 11:30
German Conversation	First and third Friday of the Month Members' Home	14:30 – 16:00
German Intermediate	Every Thursday St Leonards Centre Oakley	14:00 – 16:00
History	First Wednesday of Month Christ Church Shaftsbury Room	13:30 – 15:00
Ladies who lunch	Third Thursday of Month Members' Homes	12:30 onward
Latin Beginners	First and third Monday of Month Christ Church	13:30 – 14:30
Line dancing 1 and 2	Every Wednesday Old Basing British Legion	10:00 – 12:00
Literature	Fourth Thursday of Month Members' Homes	10:00 – 11:30
Local History Group	Second Monday of Month Various	14:00 – 17:00
Mahjong	First and third Monday of Month Christ Church Shaftsbury Room	14:00 – 16:30
Members on their own (MOTO)	Various	
Mindfulness and Meditation	Every other Tuesday Members' Home	16:00 – 17:00
Music and words	Second Thursday of Month St Mary's Parish Room Old Basing	9:45 – 12:00

Needles and pins	First and third Friday of Month Christ Church Shaftsbury Room	9:30 – 11:30
Patchwork and quilting	Second and fourth Wednesday Christ Church Shaftsbury Room	10:00 – 12:00
Photography	First Tuesday of Month Christ Church Shaftsbury Room	14:00 – 16:00
Poetry appreciation	Fourth Tuesday of Month Zoom	15:00 – 17:00
Quiz group	Alternate Tuesdays St Andrew's Church	13:30 – 15:30
Rounders	Most Wednesdays Basingstoke Sports and Social Club	13:30 – 14:30
Rummikub	Third Friday of Month Christ Church Shaftsbury Room	14:00 – 17:00

Group	Day/Venue	Time
Science and technology	First Tuesday of Month Queen Mary's College	10:00 – 12:00
Scrabble	Third Monday of Month Christ Church Hannah More Room	10.00 -12.00
Simply Sewing	First and third Thursday of Month Christ Church Hannah More Room	10.00 -12.00
Singing for pleasure	First and third Monday of Month St Mary's Parish Church	14:00 – 15:30
Skittles	Every Monday November to March Basingstoke Town Bowling Club	10:00 – 12:00
Spanish Levels 1,2 & 3	Every Friday St Leonard's Centre Oakley	9:45 – 11:15
Spanish Level 4	Every Friday St Leonard's Centre Oakley	11:15 – 12:45
Table tennis	Every Friday Everest Community Academy	15:00 – 17:00
Transport	4th Thursday of Month Kempshott Village Hall	10.15-12.00
Walkers	Sundays Various	13:00 onwards
Walking Football	From Jan First & Third Thursday of Month Everest Community Academy (Gym)	17:00 – 18:00
Walking netball	Every Tuesday Russell Howard Park	12:00 – 13:00
Walks with your camera	Third Friday of Month Various	14:00 onwards

For more information visit our website

www.basingstokeu3a.org

or drop us an email

basingstokeu3aenquiries@gmail.com



Basingstoke — Old Basing U3A

U3A Meetings Schedule 2022/23



**Currently, we have over 60 different groups in
our local area, covering all manner of activities.**

Something for everyone.

Come and join us.

**Group meeting times 2022/2023 (W) = Weekly, (F) =
Fortnightly, (M) = Monthly**

	1 st Week	2 nd Week	3 rd Week	4 th / last week
Monday	<p>Croquet 10:00 start (March – September) (W) French intermediate 10:00 - 12:00 (W) French advanced 10:00 - 12:00 (W) Skittles 10:00 - 12:00 (November - March) (W) Latin beginners 13:30 - 14:30 (F) Bridge for improvers 14:00 - 16:00 (20 weeks) (W) Croquet 14:00 - 17:00 (March – September) (W) Mah Jong 14:00 - 16:30 (F) Art4All 14:00 - 16:00 (F) Singing for pleasure 14:00 - 15:30 (F)</p>	<p>Croquet 10:00 start (Mar – Sep) French intermediate 10:00 - 12:00 French advanced 10:00 - 12:00 Skittles 10:00 - 12:00 Bridge for improvers 14:00 - 16:00 (20 weeks) Croquet 14:00 - 17:00 (March – September) Local history 14:00 - 17:00 (M)</p>	<p>Croquet 10:00 start (Mar – Sep) French Intermediate 10:00 - 12:00 French advanced 10:00 - 12:00 Skittles 10:00 - 12:00 Scrabble 10:00 - 12:00 (M) Bridge for improvers 14:00 - 16:00 (20 weeks) Croquet 14:00 - 17:00 (March – September) Latin beginners 13:30 - 14:30 Discussion Group 14:00 – 16:00 Mah Jong 14:00 - 16:30 Art4All 14:00 - 16:00 Singing for pleasure 14:00 - 15:30</p>	<p>Croquet 10:00 start (Mar – Sep) French intermediate 10:00 - 12:00 French advanced 10:00 - 12:00 Skittles 10:00 - 12:00 Bridge for improvers 14:00 - 16:00 (20 weeks) Croquet 14:00 - 17:00 (March – September) Book Club (Group 1) 14:00 – 16:00 (M) Film Group 14:00 - 16:00 (M)</p>
Tuesday	<p>French conversation 10:00 - 12:00 (W) French basic/beginners 10.00 - 11.15 (W) French basic/improvers 11:00 - 12:15 (W) Science and Technology 10:00 - 12:00 (M) Book Club (Group 2) 10:00 – 12:00 (M) Walking netball 12:00 - 13:00 (W) Croquet 14:00 - 17:00 (W) (March – September) Photography 14:00 - 16:00 (M) Very Relaxed Duplicate Bridge 14:00 - 16:30 (W)</p>	<p>French conversation 10:00 - 12:00 French basic/beginners 10.00 - 11.15 French basic/improvers 11:00 - 12:15 Backgammon 10:00 - 12:00 (M) Walking netball 12:00 - 13:00 Art & Craft 13:30 - 15:30 (F) Croquet 14:00 - 17:00 (March – September) Very Relaxed Duplicate Bridge 14:00 - 16:30</p>	<p>French basic/beginners 10.00 - 11.15 French basic/improvers 11:00 - 12:15 French conversation 10:00 - 12:00 Calligraphy 10:00 - 12:00 (M) Walking netball 12:00 - 13:00 Croquet 14:00 - 17:00 (March – September) Very Relaxed Duplicate Bridge 14:00 - 16:30</p>	<p>French conversation 10:00 - 12:00 French basic/beginners 10.00 - 11.15 French basic/improvers 11:00 - 12:15 Walking netball 12:00 - 13:00 Art & Craft 13:30 - 15:30 Croquet 14:00 - 17:00 (March – September) Very Relaxed Duplicate Bridge 14:00 - 16:30 Poetry appreciation 15:00 - 17:00 (M)</p>
Wednesday	<p>Croquet 10:00 start (March – September) (W) Line dancing 1 10:00 - 11:00; 2 11:00 - 12:00 (W) German basic/improvers 11:00 - 12:30 (W) Biography 10:00 - 12:00 (M) Rounders 13:30 - 14:30 (3 times a month) History 13:30 - 15:00 (M) Environment in the news 14:00 - 16:00 (M)</p>	<p>Patchwork & quilting 10:00 - 12:00 (F) Croquet 10:00 start (March – September) Line dancing 1: 10:00 - 11:00; 2: 11:00 - 12:00 German basic/improvers 11:00 - 12:30 Monthly meeting 13:30 – 15:30 (M)</p>	<p>Croquet 10:00 start (Mar – Sep) Line dancing 1 10:00 - 11:00; 2 11:00 - 12:00 German basic/improvers 11:00 - 12:30 Rounders 13:30 - 14:30 Art history and appreciation 14:00 - 16:00 (M)</p>	<p>Patchwork & quilting 10:00 - 12:00 Croquet 10:00 start (Mar – Sep) Line dancing 1 10:00 - 11:00; 2 11:00 - 12:00 German basic/improvers 11:00 - 12:30 Rounders 13:30 - 14:30 Family history (last week) 14:00 - 16:00 (M)</p>
Thursday	<p>Bridge for beginners 10:00 - 12:30 (20 weeks) Croquet 10:00 start (W) (March – September) Simply sewing 10:00 - 12:00 (F) Bridge - duplicate 13:30 - 16:30 (W) German intermediate 14:15 - 16:15 (W) Creative writing 15:00 - 16:30 (F) Walking football 17:00 - 18:00 (F)</p>	<p>Music & Words 9:45 - 12:00 (M) Bridge for beginners 10:00 - 12:30 (20 weeks) Croquet 10:00 start (March – September) Bridge - duplicate 13:30 - 16:30 German intermediate 14:15 - 16:15</p>	<p>Bridge for beginners 10:00 - 12:30 (20 weeks) Croquet 10:00 start (March – September) Simply sewing 10:00 - 12:00 (F) Ladies who lunch 12:30 start (M) Bridge - duplicate 13:30 - 16:30 German intermediate 14:15 - 16:15 Creative writing 15:00 - 16:30 (F) Walking football 17:00 - 18:00 (F)</p>	<p>Bridge for beginners 10:00 - 12:30 (20 weeks) Croquet 10:00 start (March – September) Literature 10:00 - 11:30 (M) Transport 10:15 - 12:00 (M) Bridge - duplicate 13:30 - 16:30 Gardening 14:00 - 16:00 (M) German intermediate 14:15 - 16:15</p>

Friday	Needles & pins 9:30 - 11:30 (F) Spanish levels 1-3 9:45 - 11:15; 4 11:15 - 12:45 (W) Folk and country dancing 10:00 - 12:00 (W) Ballroom dancing 13:30 - 15:30 German conversation 14:00 - 15:00 (F) Badminton 15:00 - 17:00 (W) Table tennis 15:00 - 17:00 (W)	Spanish levels 1-3 9:45 - 11:15; 4 11:15 - 12:45 Folk and country dancing 10:00 - 12:00 Ballroom dancing 13:30 - 15:30 Badminton 15:00 - 17:00 Table tennis 15:00 - 17:00	Needles & pins 9:30 - 11:30 Spanish Levels 1-3 9:45 - 11:15; 4 11:15 - 12:45 Folk and country dancing 10:00 - 12:00 Ballroom dancing 13:30 - 15:30 German conversation 14:00 - 15:00 Rummikub 14:00 - 17:00 (M) Walks with your camera 14:00 start (M) Badminton 15:00 - 17:00 Table tennis 15:00 - 17:00	Spanish Levels 1-3 9:45 - 11:15; 4 11:15 - 12:45 Folk and country dancing 10:00 - 12:00 Ballroom dancing 13:30 - 15:30 Badminton 15:00 - 17:00 Table tennis 15:00 - 17:00
Others	BCOT luncheon: usually Thursday Board games: Tuesdays once a month 13:30 - 15:30 Cycling: Variable day 2/3 times each week Excursions and holidays: various Members On Their Own (MOTO): Various Mindfulness & Meditation: Alternate Tuesdays 16:00 – 17.00 Quiz Group: Alternate Tuesdays 13:30 - 15:30 Walkers: Every Sunday 13:00 start			

	Basingstoke – Old Basing u3a Group Meeting Times and Venues 2022/2023	
Art & Craft	2nd & 4th Tuesday each month 13.30 - 15.30	Ridgeway Centre
Art History Appreciation	3rd Wednesday of the month 14.00 - 16.00	Christ Church, Shaftsbury Room
Art4All	1st & 3rd Monday in the month 14.00 - 16.00	Ridgeway Centre
Backgammon	2nd Tuesday of the month 10.00 - 12.00	Member's Home
Badminton	Friday 15.00 - 17.00	Everest Community Academy
Ballroom dancing	Friday 13.30 - 15.30	Old Basing RBL & Social Club Ltd
BCOT luncheon	Usually Thursday	BCOT
Biography	1st Wednesday in Oct-Dec, Feb, Apr, Jun 10.00 - 12.00	Old Basing Pavilian Room
Board Games	Tuesdays once a month 13.30 - 15.30	St Andrew's Church
Book Club 1	4th Monday 2 – 4pm	Kempshott Village Hall
Book Club 2	4th Tuesday in the month 10.00 - 12.00	Brookvale Village Hall
Bridge Beginners	Thursday 10.00 to 12.30 (20 weeks)	Members home
Bridge Improvers	Monday 14.00 16.00 (20 weeks)	Basingstoke Bridge Club
Duplicate Bridge	Thursday 13.30 - 15.30	Sherbourne St John Village Hall
Very Relaxed Duplicate Bridge	Tuesday 14.00 - 16.30	On line
Calligraphy	3rd Tuesday in month 10.00 - 12.00	St. Mary's Parish Church
Creative Writing	First and third Thursdays of the month 15.00 - 16.30	Viabes
Croquet	Mon,Wed,Thu at 10.00(Mon & Tues 14:00 to1700). March to September	TBC Bowls Club, St Andrew's Road
Discussion Group	3rd Monday in the month 14.00 - 16.00	Sycamore Hall Winkleberry
Cycling	Variable day 2/3 times each week	
Environment in the News	1st Wednesday in the month 14.00 - 16.00	Chineham Village Hall
Excursions and holidays	Various	
Family History	Last Wednesday in the month 14.00 - 16.00	Christ Church, Shaftsbury Room
Film Group	4th Monday in the month 14.00 - 16.00	Christ Church, Shaftsbury Room
Folk and Country Dancing	Every Friday 10.00 - 12.00	Ridgeway Centre

French Basic / Beginners,	Tuesday 10:00 - 11:15	Member's Home
French Basic / Improvers	Tuesday 11.00 - 12.15	Member's home
French Intermediate	Monday 10.00 - 12.00	St Leonards Centre, Oakley
French Advanced	Monday 10.00 - 12.00	St Leonards Centre, Oakley
French Conversation	Tuesday 10.00 - 12.00	ZOOM
Gardening	4th Thursday of the month 14.00 - 16.00	Brookvale Village Hall
German Basic/Improvers,	Wednesday 11.00 - 11.30	St Leonards Centre, Oakley
German Intermediate	Thursday 14.00 - 16.00	St Leonards Centre, Oakley
German Conversation	1st and 3rd Friday of the month 14.30 - 16.00	Member's Home
History	1st Wednesday in the month 13.30 - 15.00	Christ Church, Shaftsbury Room
Ladies who lunch	3rd Thursday in the month 12.30 onwards	Member's Home
Latin Beginners	1st and 3rd Monday 13:30 - 14:30	Christ Church
Line Dancing 1 and 2	Every Wednesday 10.00 - 12.00	Old Basing RBL & Social Club Ltd
Literature	4th Thursday in the month 10.00 to 11.30	Member's Home
Local History Group	2nd Monday in the month from 14.00 - 17.00	Various
Mahjong	Monday - 1st & 3rd 14.00 - 16.30	Christ Church, Shaftsbury Room
Mindfulness and Meditation	Alternate Tuesdays 16.00 - 17.00	Members home
Members On Their Own	Various	
Music & Words	2nd Thursday in the month 9.45 - 12.00	Parish Room
Needles & pins	1st & 3rd Friday in the month 9.30 - 11.30	Christ Church, Shaftsbury Room
Patchwork & Quilting	2nd & 4th Wednesday 10.00 - 12.00	Christ Church, Shaftsbury Room
Photography	1st Tuesday in the month 14.00 - 16.00	Christ Church, Shaftsbury Room
Poetry appreciation	4th Tuesday in the month 15.00 - 17.00	Zoom
Quiz Group	Alternate Tuesdays 13.30 - 15.30	St Andrew's Church
Rounders	1st,3rd,4th and 5th Wednesdays 13.30 - 14.30	Basingstoke Sports and Social Club
Rummikub	3rd Friday in the month 14.00 - 17.00	Christ Church, Shaftsbury Room

Science and Technology	1st Tuesday in the month 10.00 - 12.00	Queen Mary's College
Scrabble	3rd Monday in the month 10.00 - 12.00	Christ Church, St Joseph's-Hannah More Room
Simply Sewing	1st and 3rd Thursday in the month 10.00 - 12.00	Christ Church, St Joseph's-Hannah More Room
Singing for pleasure	1st & 3rd Monday in the month 14.00 - 15.30	St. Mary's Parish Church
Skittles	Monday 10.00 - 12.00 November to March	Basingstoke Town Bowling Club
Spanish Levels 1, 2, 3	Friday 09:45 - 11:15	St Leonards Centre, Oakley
Spanish Level 4	Friday 11.15 - 12.45	St Leonards Centre, Oakley
Table Tennis	Fridays 15.00 - 17.00	Everest Community Academy
Transport	4th Thursday of the month 10.15 -12.00	Kempshott Village Hall
Walkers	Every Sunday 13.00 onwards	Various
Walking Football	1st and 3rd Thursday 5-6pm	Everest Community Academy
Walking Netball	Every Tuesday 12.00 - 13.00	Russell Howard Park
Walks With Your Camera	3rd Friday in the month 14.00 onwards	Various